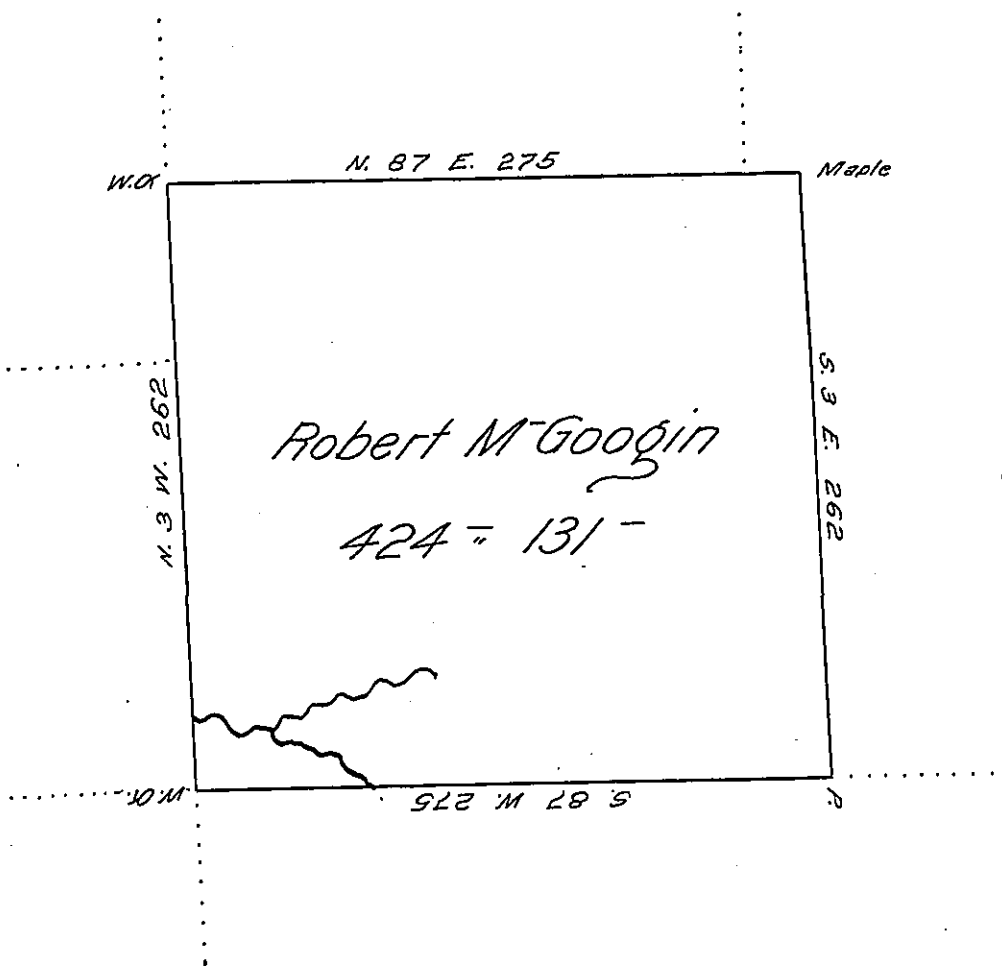


Jacob Reed

R. Morgan

Geo. Gibson



John Gibson

Situate on the waters of Sandy Creek in District No 3 Allegany County containing four hundred twenty four Acres Acres thirty one perches and allowance; Surveyd 26 May 1798 on Actual Settlement made by Robert M Googin 6 April 1797.

Surveyor General  
of  
Pennsylvania

Ben Stokely D.S.

IN TESTIMONY that the above is a copy of the original remaining on file in the Department of Internal Affairs of Pennsylvania, made conformably to an Act of Assembly approved the 16th day of February, 1833, I have hereunto set my Hand and caused the Seal of said Department to be affixed at Harrisburg, this thirtieth day of June 1906.

*Geo A Brown*  
Secretary of Internal Affairs.